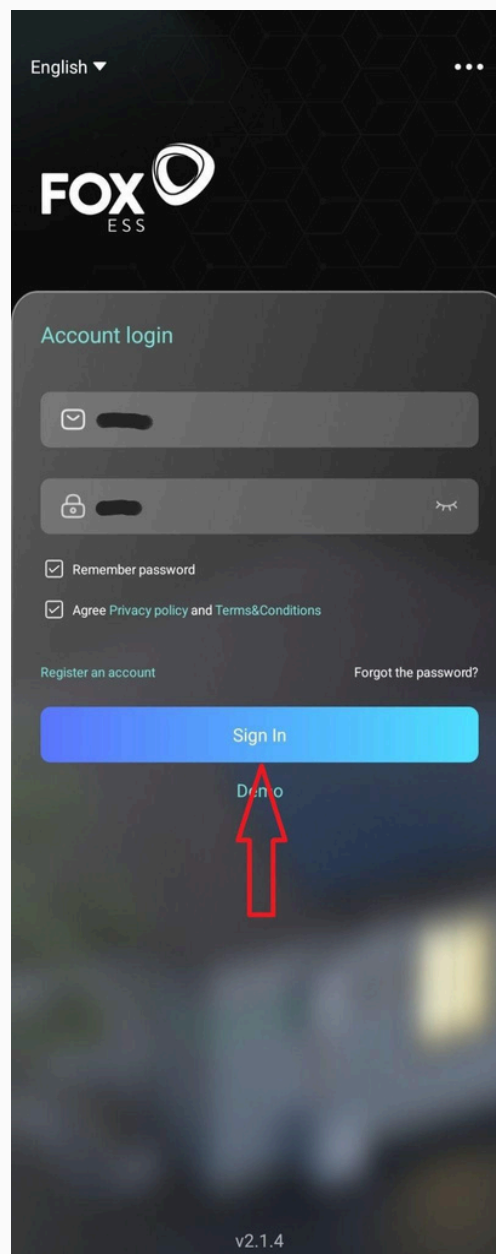




WiFi Setup for Fox KH Series Via FouxCloud2.0 Bluetooth Datalogger

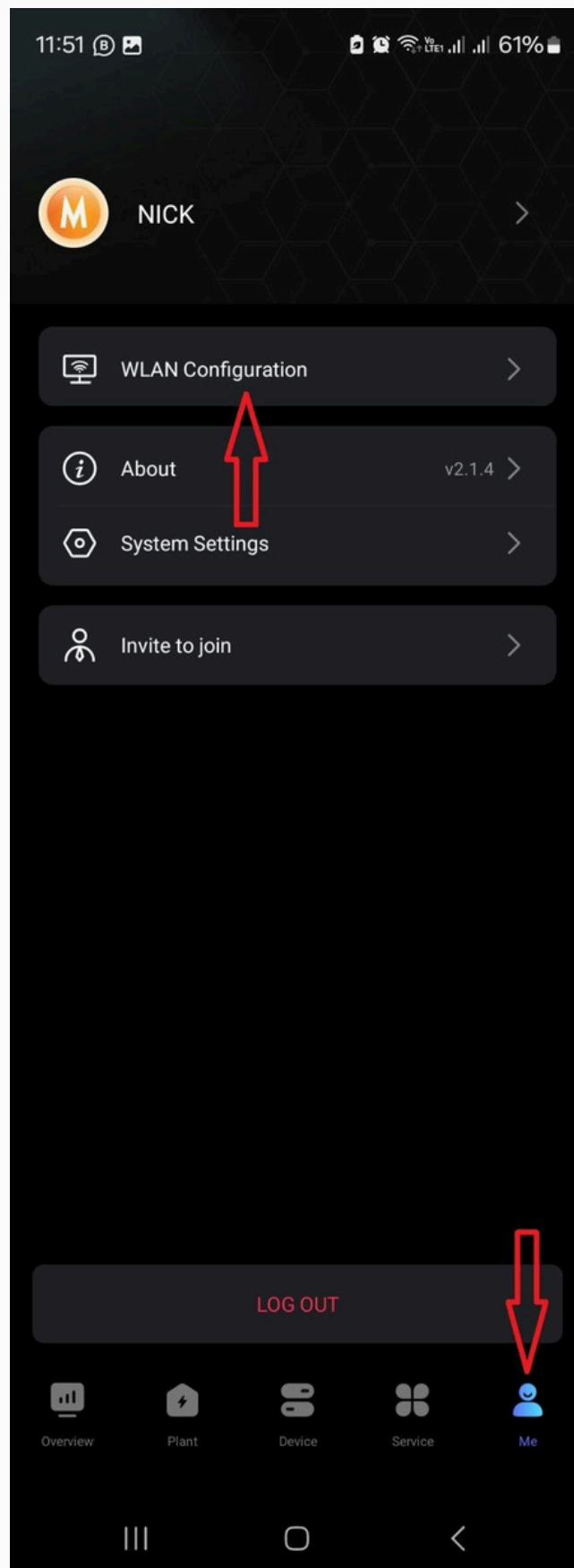
Firstly you will need to download the FoxCloud2.0 App,

Once installed you will input your **Username** and **Password** then **Tap** on **Sign In**

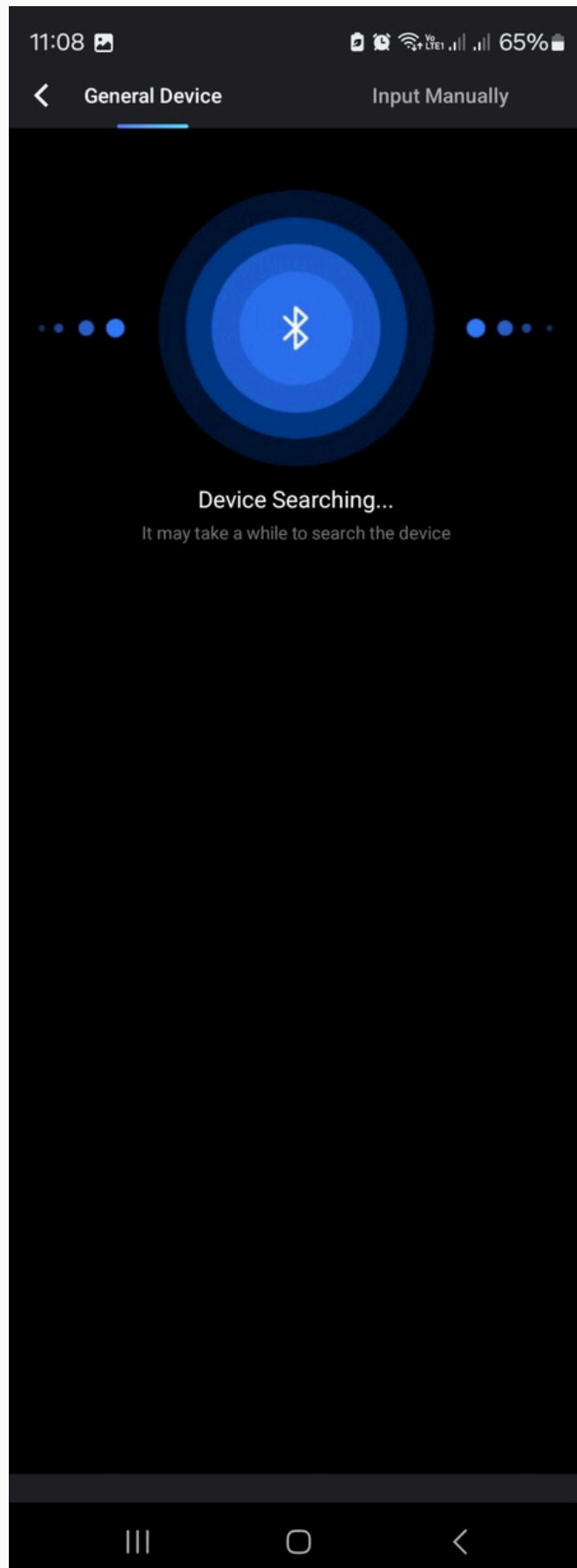


Then **Tap** on **ME** Located in the bottom right Corner

Then **Tap** on **WLAN Configuration**



The page showing Device Searching will appear
(Please ensure that the Bluetooth is enabled on your Device)

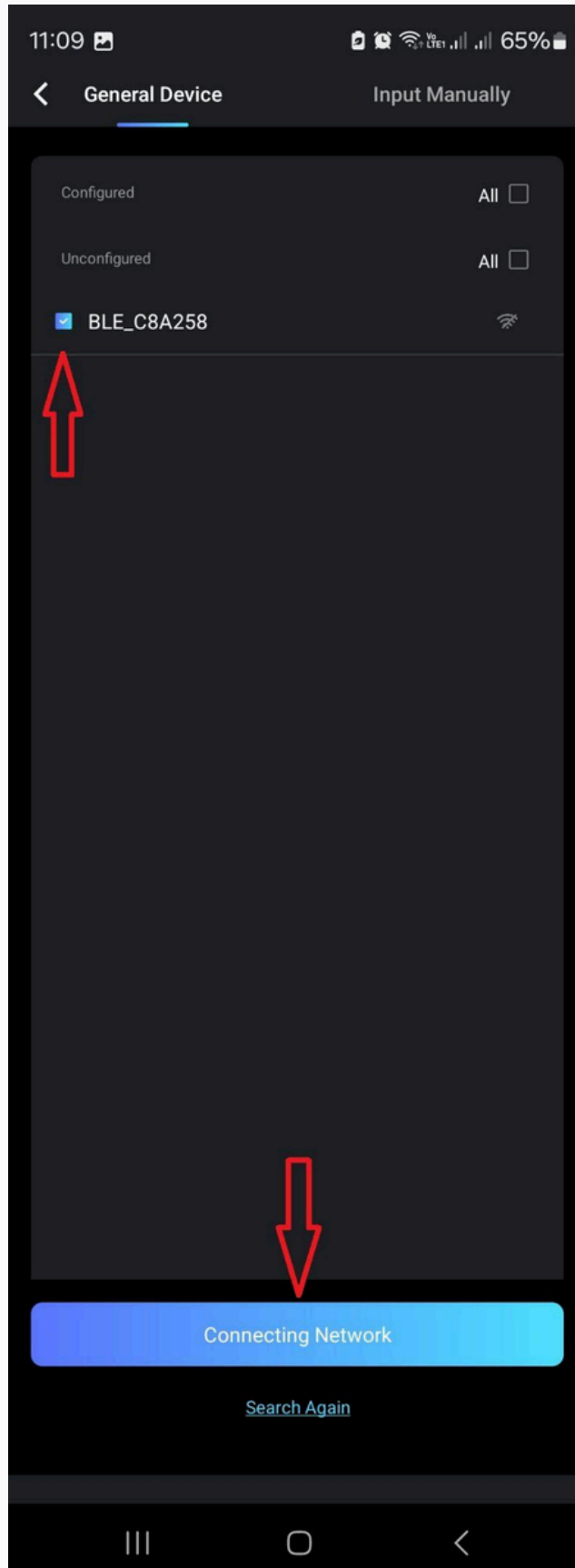


Then you will see a device on the list called **BLE_.....**

Tap on **BLE_.....**

you will then get a **Blue**

Then **Tap Connecting Network**

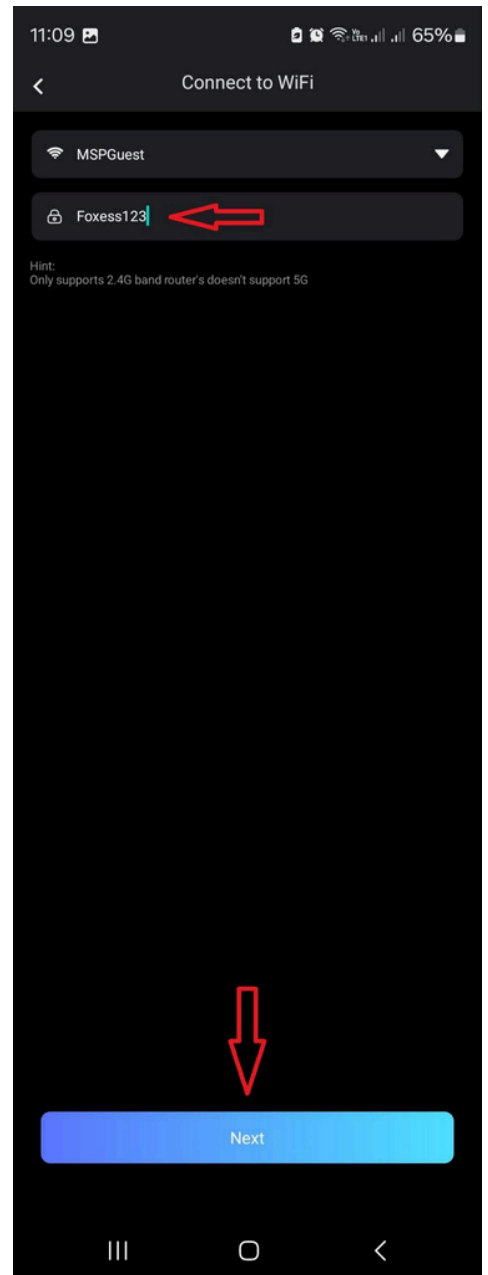
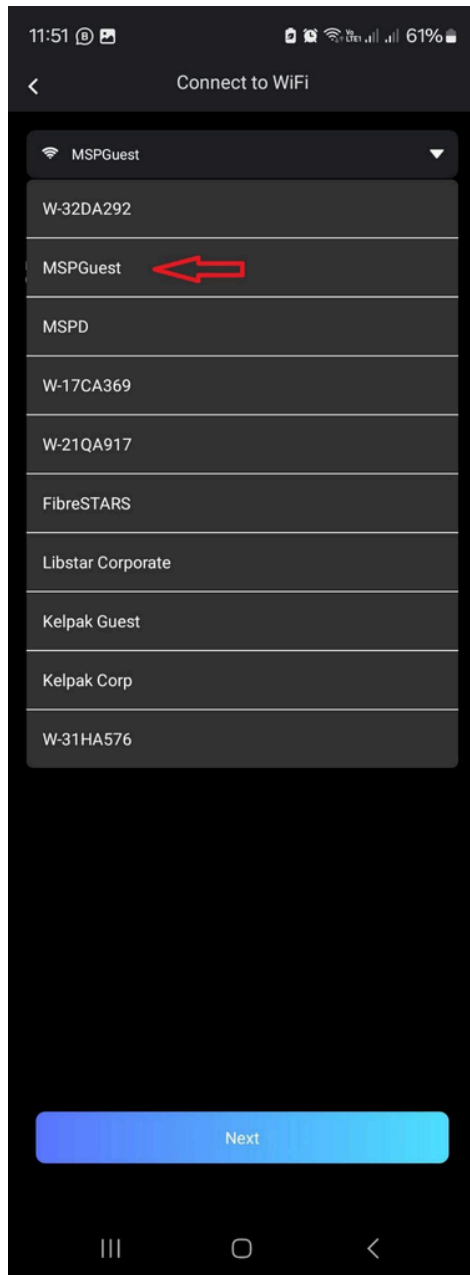


Then **Tap** on the **dropdown tab** under **SSID**,

Then **Tap** on the client's WiFi network that you would like to connect to,

Then input the WiFi password,

Then **Tap Next**,



The page showing Configuration Complete will be displayed if the WiFi connection is successful

